

EUXTON LANE

PEAR TREE LANE

FAIRVIEW

SCHOOL LANE

PROPOSED 1.5m FOOTWAY TO BE FORMED USING PLASTIC CELLULAR MODULES FILLED WITH SEEDED TOPSOIL TO CREATE A GRASS VERGE TYPE APPEARANCE. PROPOSED KERB & BACK OF FOOTWAY EDGING MATERIALS TO BE AGREED WITH LANCAIRES COUNTY COUNCIL.

AREA TO REMAIN AS EXISTING

PROPOSED 1.5m FOOTWAY TO BE FORMED USING PLASTIC CELLULAR MODULES FILLED WITH SEEDED TOPSOIL TO CREATE A GRASS VERGE TYPE APPEARANCE. PROPOSED KERB & BACK OF FOOTWAY EDGING MATERIALS TO BE AGREED WITH LANCAIRES COUNTY COUNCIL.

EXISTING DITCH TO BE INFILLED WITH SUITABLE LOAD BEARING MATERIAL BETWEEN LOCATIONS A & B (TO SUPPORT FOOTWAY) & NEW 300mm Ø CONCRETE DRAINAGE PIPE TO BE LAID ALONG BOTTOM OF DITCH TO MAINTAIN WATER COURSE OPERATION.

EXISTING DITCH TO BE INFILLED WITH SUITABLE LOAD BEARING MATERIAL BETWEEN LOCATIONS B & C (TO SUPPORT FOOTWAY) & NEW 300mm Ø CONCRETE DRAINAGE PIPE TO BE LAID ALONG BOTTOM OF DITCH TO MAINTAIN WATER COURSE OPERATION.

EXISTING DITCH TO BE INFILLED WITH SUITABLE LOAD BEARING MATERIAL BETWEEN LOCATIONS B & C (TO SUPPORT FOOTWAY) & NEW 300mm Ø CONCRETE DRAINAGE PIPE TO BE LAID ALONG BOTTOM OF DITCH TO MAINTAIN WATER COURSE OPERATION.

EXISTING DITCH TO BE INFILLED WITH SUITABLE LOAD BEARING MATERIAL BETWEEN LOCATIONS B & C (TO SUPPORT FOOTWAY) & NEW 300mm Ø CONCRETE DRAINAGE PIPE TO BE LAID ALONG BOTTOM OF DITCH TO MAINTAIN WATER COURSE OPERATION.

EXISTING DITCH TO BE INFILLED WITH SUITABLE LOAD BEARING MATERIAL BETWEEN LOCATIONS B & C (TO SUPPORT FOOTWAY) & NEW 300mm Ø CONCRETE DRAINAGE PIPE TO BE LAID ALONG BOTTOM OF DITCH TO MAINTAIN WATER COURSE OPERATION.

EXISTING DITCH TO BE INFILLED WITH SUITABLE LOAD BEARING MATERIAL BETWEEN LOCATIONS B & C (TO SUPPORT FOOTWAY) & NEW 300mm Ø CONCRETE DRAINAGE PIPE TO BE LAID ALONG BOTTOM OF DITCH TO MAINTAIN WATER COURSE OPERATION.

EXISTING DITCH TO BE INFILLED WITH SUITABLE LOAD BEARING MATERIAL BETWEEN LOCATIONS B & C (TO SUPPORT FOOTWAY) & NEW 300mm Ø CONCRETE DRAINAGE PIPE TO BE LAID ALONG BOTTOM OF DITCH TO MAINTAIN WATER COURSE OPERATION.

EXISTING DITCH TO BE INFILLED WITH SUITABLE LOAD BEARING MATERIAL BETWEEN LOCATIONS B & C (TO SUPPORT FOOTWAY) & NEW 300mm Ø CONCRETE DRAINAGE PIPE TO BE LAID ALONG BOTTOM OF DITCH TO MAINTAIN WATER COURSE OPERATION.

EXISTING DITCH TO BE INFILLED WITH SUITABLE LOAD BEARING MATERIAL BETWEEN LOCATIONS B & C (TO SUPPORT FOOTWAY) & NEW 300mm Ø CONCRETE DRAINAGE PIPE TO BE LAID ALONG BOTTOM OF DITCH TO MAINTAIN WATER COURSE OPERATION.

EXISTING DITCH TO BE INFILLED WITH SUITABLE LOAD BEARING MATERIAL BETWEEN LOCATIONS B & C (TO SUPPORT FOOTWAY) & NEW 300mm Ø CONCRETE DRAINAGE PIPE TO BE LAID ALONG BOTTOM OF DITCH TO MAINTAIN WATER COURSE OPERATION.

EXISTING DITCH TO BE INFILLED WITH SUITABLE LOAD BEARING MATERIAL BETWEEN LOCATIONS B & C (TO SUPPORT FOOTWAY) & NEW 300mm Ø CONCRETE DRAINAGE PIPE TO BE LAID ALONG BOTTOM OF DITCH TO MAINTAIN WATER COURSE OPERATION.

EXISTING DITCH TO BE INFILLED WITH SUITABLE LOAD BEARING MATERIAL BETWEEN LOCATIONS B & C (TO SUPPORT FOOTWAY) & NEW 300mm Ø CONCRETE DRAINAGE PIPE TO BE LAID ALONG BOTTOM OF DITCH TO MAINTAIN WATER COURSE OPERATION.

EXISTING DITCH TO BE INFILLED WITH SUITABLE LOAD BEARING MATERIAL BETWEEN LOCATIONS B & C (TO SUPPORT FOOTWAY) & NEW 300mm Ø CONCRETE DRAINAGE PIPE TO BE LAID ALONG BOTTOM OF DITCH TO MAINTAIN WATER COURSE OPERATION.

EXISTING DITCH TO BE INFILLED WITH SUITABLE LOAD BEARING MATERIAL BETWEEN LOCATIONS B & C (TO SUPPORT FOOTWAY) & NEW 300mm Ø CONCRETE DRAINAGE PIPE TO BE LAID ALONG BOTTOM OF DITCH TO MAINTAIN WATER COURSE OPERATION.

EXISTING DITCH TO BE INFILLED WITH SUITABLE LOAD BEARING MATERIAL BETWEEN LOCATIONS B & C (TO SUPPORT FOOTWAY) & NEW 300mm Ø CONCRETE DRAINAGE PIPE TO BE LAID ALONG BOTTOM OF DITCH TO MAINTAIN WATER COURSE OPERATION.

EXISTING DITCH TO BE INFILLED WITH SUITABLE LOAD BEARING MATERIAL BETWEEN LOCATIONS B & C (TO SUPPORT FOOTWAY) & NEW 300mm Ø CONCRETE DRAINAGE PIPE TO BE LAID ALONG BOTTOM OF DITCH TO MAINTAIN WATER COURSE OPERATION.

EXISTING DITCH TO BE INFILLED WITH SUITABLE LOAD BEARING MATERIAL BETWEEN LOCATIONS B & C (TO SUPPORT FOOTWAY) & NEW 300mm Ø CONCRETE DRAINAGE PIPE TO BE LAID ALONG BOTTOM OF DITCH TO MAINTAIN WATER COURSE OPERATION.

EXISTING DITCH TO BE INFILLED WITH SUITABLE LOAD BEARING MATERIAL BETWEEN LOCATIONS B & C (TO SUPPORT FOOTWAY) & NEW 300mm Ø CONCRETE DRAINAGE PIPE TO BE LAID ALONG BOTTOM OF DITCH TO MAINTAIN WATER COURSE OPERATION.

EXISTING DITCH TO BE INFILLED WITH SUITABLE LOAD BEARING MATERIAL BETWEEN LOCATIONS B & C (TO SUPPORT FOOTWAY) & NEW 300mm Ø CONCRETE DRAINAGE PIPE TO BE LAID ALONG BOTTOM OF DITCH TO MAINTAIN WATER COURSE OPERATION.

EXISTING DITCH TO BE INFILLED WITH SUITABLE LOAD BEARING MATERIAL BETWEEN LOCATIONS B & C (TO SUPPORT FOOTWAY) & NEW 300mm Ø CONCRETE DRAINAGE PIPE TO BE LAID ALONG BOTTOM OF DITCH TO MAINTAIN WATER COURSE OPERATION.

EXISTING DITCH TO BE INFILLED WITH SUITABLE LOAD BEARING MATERIAL BETWEEN LOCATIONS B & C (TO SUPPORT FOOTWAY) & NEW 300mm Ø CONCRETE DRAINAGE PIPE TO BE LAID ALONG BOTTOM OF DITCH TO MAINTAIN WATER COURSE OPERATION.

EXISTING DITCH TO BE INFILLED WITH SUITABLE LOAD BEARING MATERIAL BETWEEN LOCATIONS B & C (TO SUPPORT FOOTWAY) & NEW 300mm Ø CONCRETE DRAINAGE PIPE TO BE LAID ALONG BOTTOM OF DITCH TO MAINTAIN WATER COURSE OPERATION.

EXISTING DITCH TO BE INFILLED WITH SUITABLE LOAD BEARING MATERIAL BETWEEN LOCATIONS B & C (TO SUPPORT FOOTWAY) & NEW 300mm Ø CONCRETE DRAINAGE PIPE TO BE LAID ALONG BOTTOM OF DITCH TO MAINTAIN WATER COURSE OPERATION.

EXISTING DITCH TO BE INFILLED WITH SUITABLE LOAD BEARING MATERIAL BETWEEN LOCATIONS B & C (TO SUPPORT FOOTWAY) & NEW 300mm Ø CONCRETE DRAINAGE PIPE TO BE LAID ALONG BOTTOM OF DITCH TO MAINTAIN WATER COURSE OPERATION.

EXISTING DITCH TO BE INFILLED WITH SUITABLE LOAD BEARING MATERIAL BETWEEN LOCATIONS B & C (TO SUPPORT FOOTWAY) & NEW 300mm Ø CONCRETE DRAINAGE PIPE TO BE LAID ALONG BOTTOM OF DITCH TO MAINTAIN WATER COURSE OPERATION.

EXISTING DITCH TO BE INFILLED WITH SUITABLE LOAD BEARING MATERIAL BETWEEN LOCATIONS B & C (TO SUPPORT FOOTWAY) & NEW 300mm Ø CONCRETE DRAINAGE PIPE TO BE LAID ALONG BOTTOM OF DITCH TO MAINTAIN WATER COURSE OPERATION.

EXISTING DITCH TO BE INFILLED WITH SUITABLE LOAD BEARING MATERIAL BETWEEN LOCATIONS B & C (TO SUPPORT FOOTWAY) & NEW 300mm Ø CONCRETE DRAINAGE PIPE TO BE LAID ALONG BOTTOM OF DITCH TO MAINTAIN WATER COURSE OPERATION.

EXISTING DITCH TO BE INFILLED WITH SUITABLE LOAD BEARING MATERIAL BETWEEN LOCATIONS B & C (TO SUPPORT FOOTWAY) & NEW 300mm Ø CONCRETE DRAINAGE PIPE TO BE LAID ALONG BOTTOM OF DITCH TO MAINTAIN WATER COURSE OPERATION.

EXISTING DITCH TO BE INFILLED WITH SUITABLE LOAD BEARING MATERIAL BETWEEN LOCATIONS B & C (TO SUPPORT FOOTWAY) & NEW 300mm Ø CONCRETE DRAINAGE PIPE TO BE LAID ALONG BOTTOM OF DITCH TO MAINTAIN WATER COURSE OPERATION.

EXISTING DITCH TO BE INFILLED WITH SUITABLE LOAD BEARING MATERIAL BETWEEN LOCATIONS B & C (TO SUPPORT FOOTWAY) & NEW 300mm Ø CONCRETE DRAINAGE PIPE TO BE LAID ALONG BOTTOM OF DITCH TO MAINTAIN WATER COURSE OPERATION.

EXISTING DITCH TO BE INFILLED WITH SUITABLE LOAD BEARING MATERIAL BETWEEN LOCATIONS B & C (TO SUPPORT FOOTWAY) & NEW 300mm Ø CONCRETE DRAINAGE PIPE TO BE LAID ALONG BOTTOM OF DITCH TO MAINTAIN WATER COURSE OPERATION.

EXISTING DITCH TO BE INFILLED WITH SUITABLE LOAD BEARING MATERIAL BETWEEN LOCATIONS B & C (TO SUPPORT FOOTWAY) & NEW 300mm Ø CONCRETE DRAINAGE PIPE TO BE LAID ALONG BOTTOM OF DITCH TO MAINTAIN WATER COURSE OPERATION.

EXISTING DITCH TO BE INFILLED WITH SUITABLE LOAD BEARING MATERIAL BETWEEN LOCATIONS B & C (TO SUPPORT FOOTWAY) & NEW 300mm Ø CONCRETE DRAINAGE PIPE TO BE LAID ALONG BOTTOM OF DITCH TO MAINTAIN WATER COURSE OPERATION.

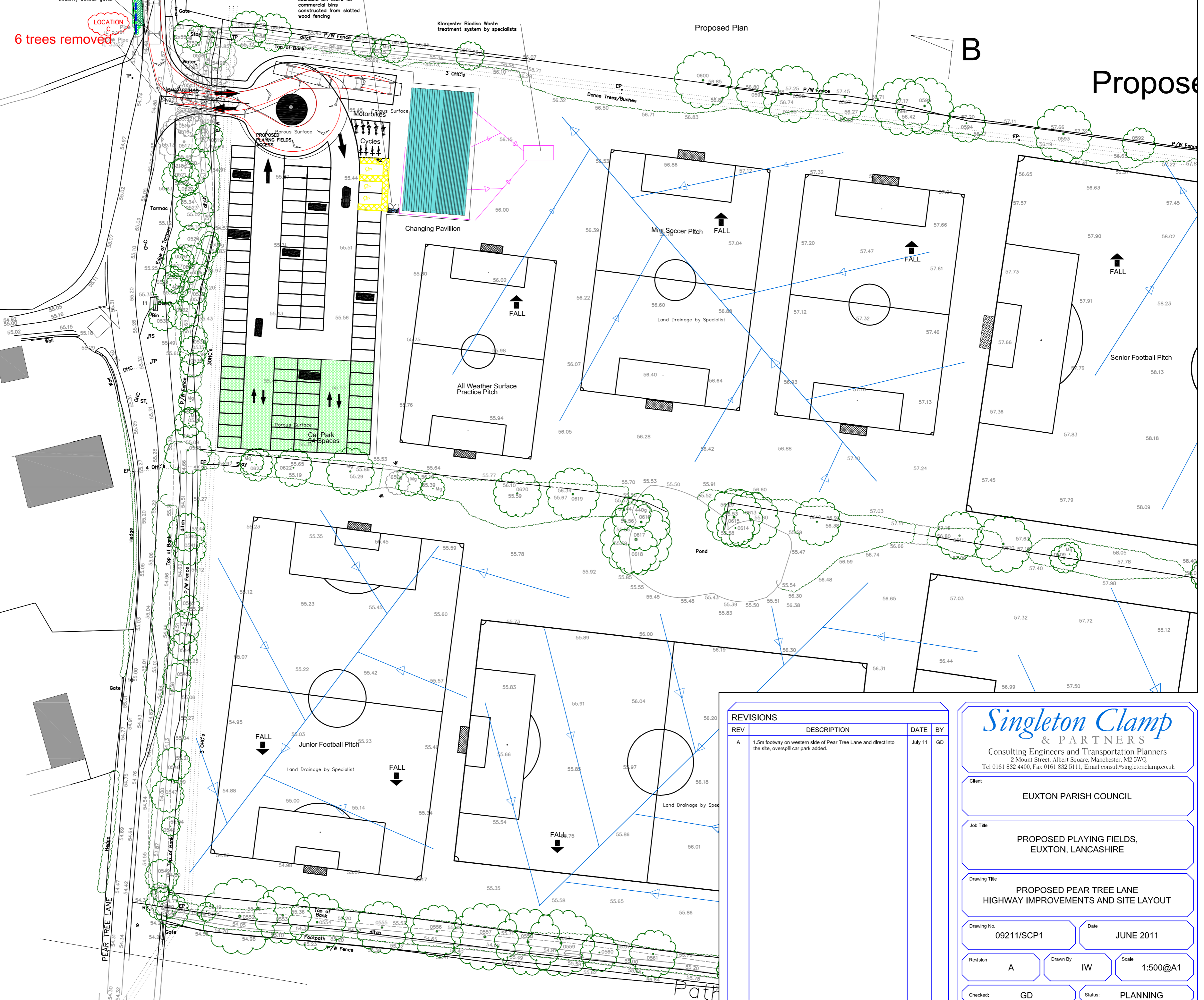
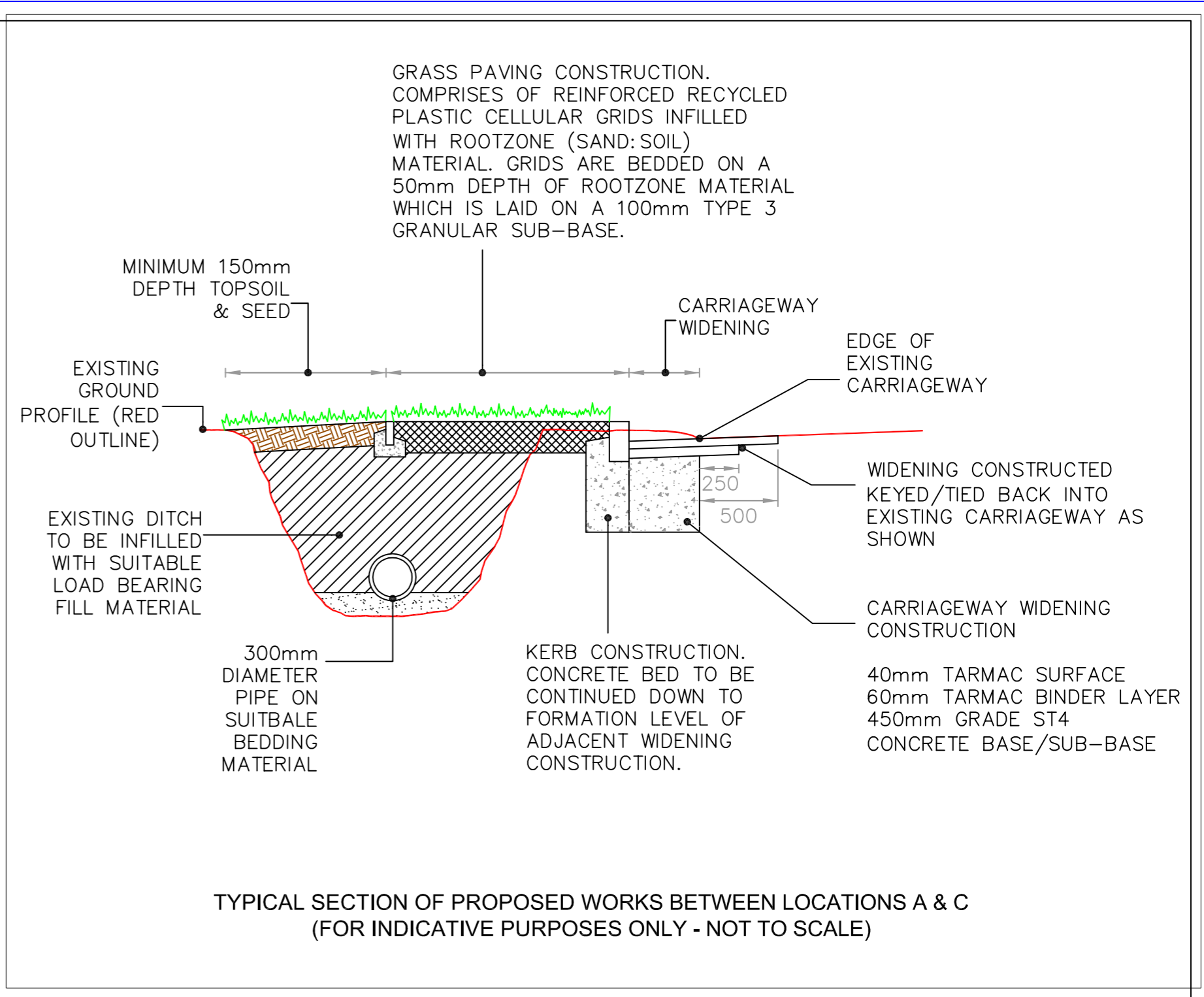
EXISTING DITCH TO BE INFILLED WITH SUITABLE LOAD BEARING MATERIAL BETWEEN LOCATIONS B & C (TO SUPPORT FOOTWAY) & NEW 300mm Ø CONCRETE DRAINAGE PIPE TO BE LAID ALONG BOTTOM OF DITCH TO MAINTAIN WATER COURSE OPERATION.

EXISTING DITCH TO BE INFILLED WITH SUITABLE LOAD BEARING MATERIAL BETWEEN LOCATIONS B & C (TO SUPPORT FOOTWAY) & NEW 300mm Ø CONCRETE DRAINAGE PIPE TO BE LAID ALONG BOTTOM OF DITCH TO MAINTAIN WATER COURSE OPERATION.

EXISTING DITCH TO BE INFILLED WITH SUITABLE LOAD BEARING MATERIAL BETWEEN LOCATIONS B & C (TO SUPPORT FOOTWAY) & NEW 300mm Ø CONCRETE DRAINAGE PIPE TO BE LAID ALONG BOTTOM OF DITCH TO MAINTAIN WATER COURSE OPERATION.

EXISTING DITCH TO BE INFILLED WITH SUITABLE LOAD BEARING MATERIAL BETWEEN LOCATIONS B & C (TO SUPPORT FOOTWAY) & NEW 300mm Ø CONCRETE DRAINAGE PIPE TO BE LAID ALONG BOTTOM OF DITCH TO MAINTAIN WATER COURSE OPERATION.

EXISTING DITCH TO BE INFILLED WITH SUITABLE LOAD BEARING MATERIAL BETWEEN LOCATIONS B & C (TO SUPPORT FOOTWAY) & NEW 300mm Ø CONCRETE DRAINAGE PIPE TO BE LAID ALONG BOTTOM OF DITCH TO MAINTAIN WATER COURSE OPERATION.



| REV | DESCRIPTION | DATE | BY |
|-----|--|---------|----|
| A | 1.5m footway on western side of Pear Tree Lane and directed into the site, overall car park added. | July 11 | GD |

Singleton Clamp & PARTNERS
Consulting Engineers and Transportation Planners
2 Mount Street, Albert Square, Manchester, M2 0WQ
Tel 0161 832 4400, Fax 0161 832 5111, Email consult@singletonclamp.co.uk

Client: **EUXTON PARISH COUNCIL**

Job Title: **PROPOSED PLAYING FIELDS, EUXTON, LANCAIRES**

Drawing Title: **PROPOSED PEAR TREE LANE HIGHWAY IMPROVEMENTS AND SITE LAYOUT**

Drawing No: **09211/SCP1** Date: **JUNE 2011**

Revision: **A** Drawn By: **IW** Scale: **1:500@A1**

Checked: **GD** Status: **PLANNING**